

Published by Inhabit Education | www.inhabiteducation.com

Inhabit Education
(Iqaluit), P.O. Box 2129, Iqaluit, Nunavut, X0A 1H0
(Toronto), 191 Eglinton Avenue East, Suite 301, Toronto, Ontario, M4P 1K1

Design and layout copyright © 2018 Inhabit Education
Text copyright © Inhabit Education
Illustrations by Lenny Lishchenko © Inhabit Education

Inuktitut Working Group

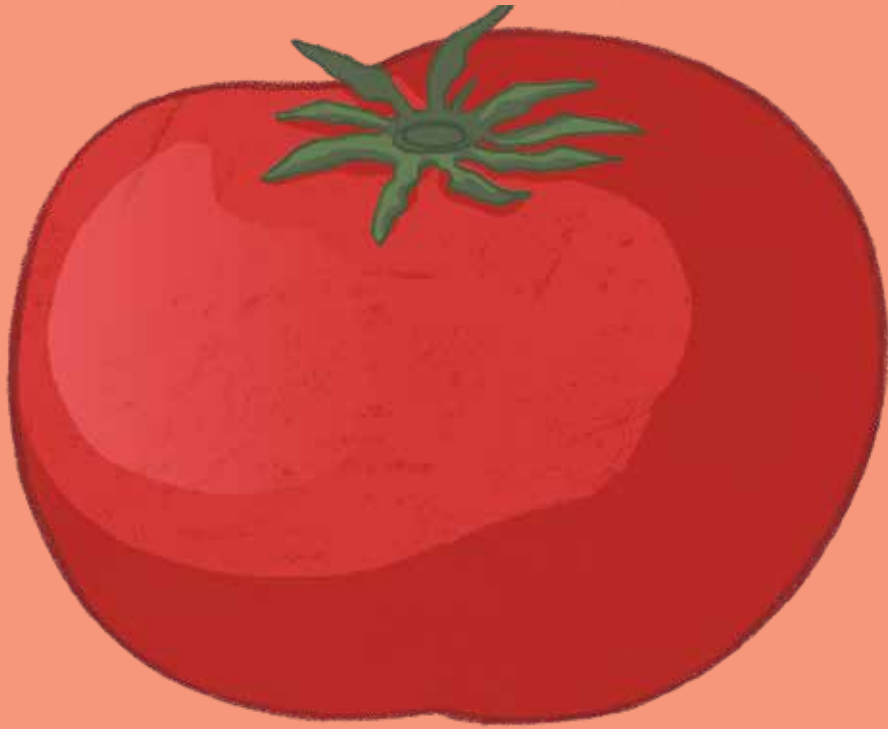
Monica Ittusardjuat
Andrea Flaherty
Nancy Goupil

All rights reserved. The use of any part of this publication reproduced, transmitted in any form or by any means, electronic, mechanical, photocopying, recording, or otherwise, or stored in a retrievable system, without written consent of the publisher, is an infringement of copyright law.

Printed in Canada.

ISBN: 978-0-2287-0226-9

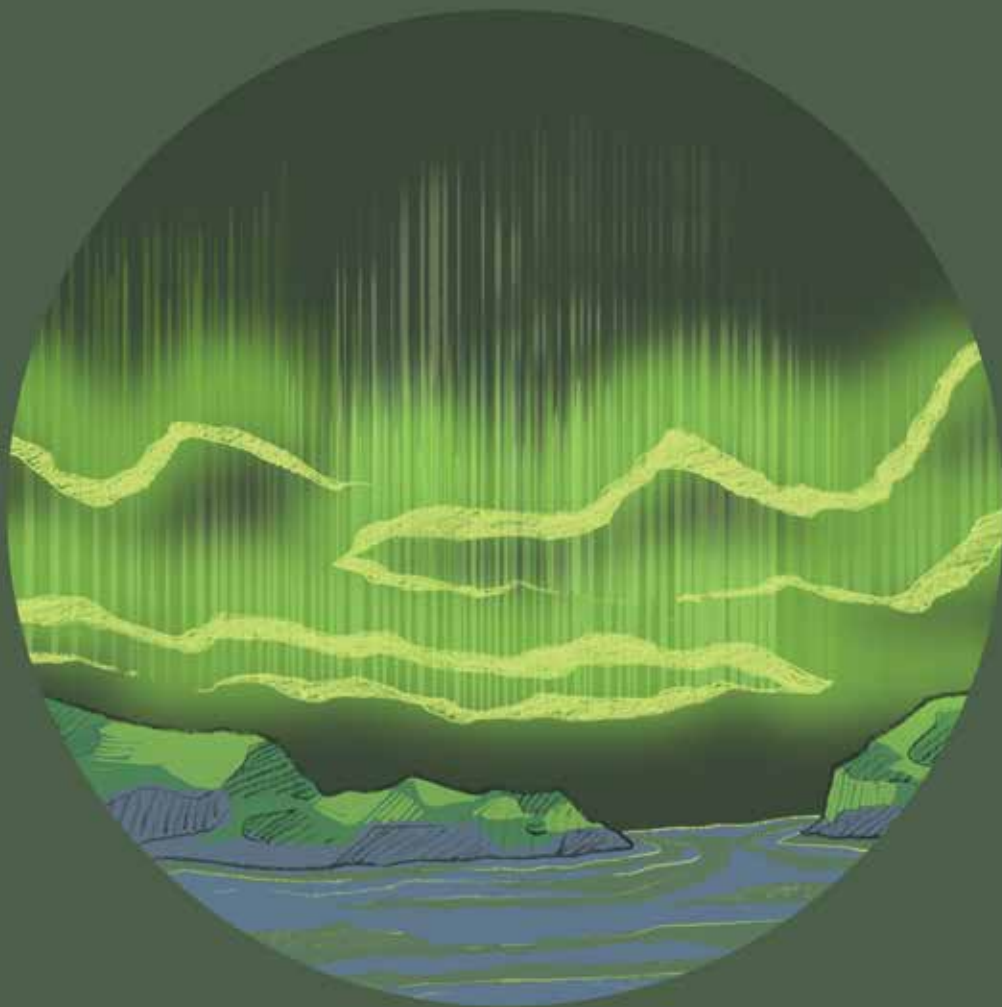




▷ Q ◁ ▷ < 9b] 9b .



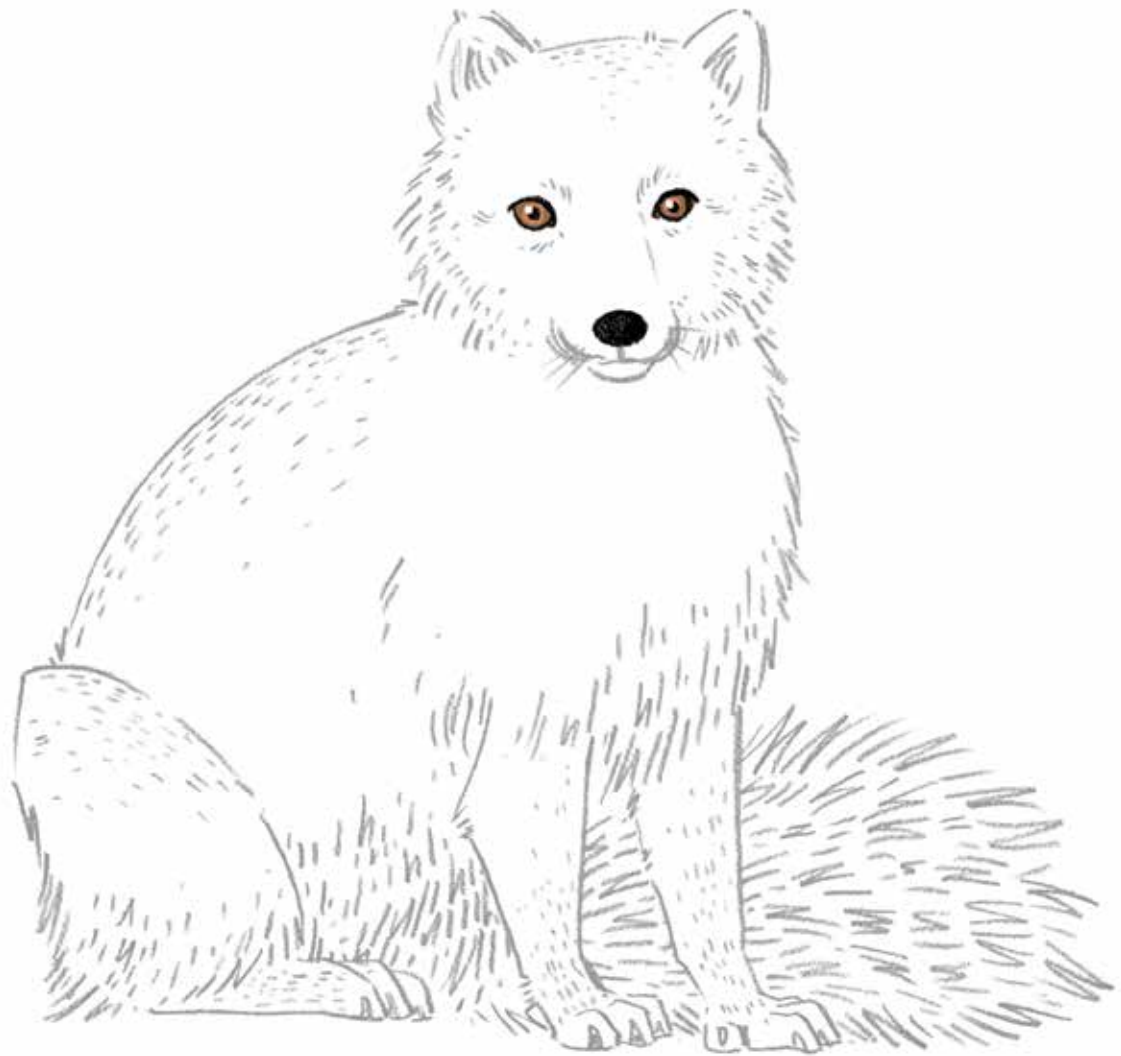
▷ Q Δ^h P.



▷Q ▷↳▷↳ᑭᑭ.



▷ Ը ԳՐԳՏԳԵՆԵՆ.



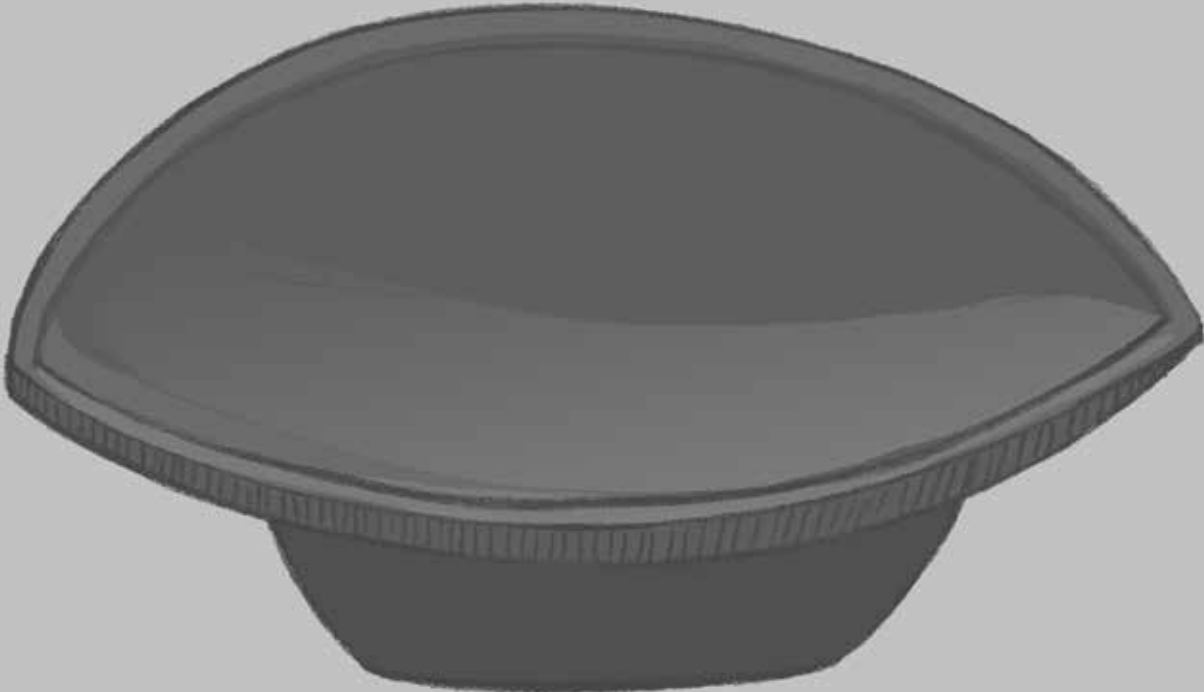
▷᠒ ᠑ᠨ▷᠊ᠨ᠑ᠨ᠊ᠨ᠑ᠨ᠊.



▷ Q bᠠᠷᠦᠨ.



▷ Q ▷ $\Delta\sigma$ ▷ ζ^b .



▷ Q Δ r^{9b} C^{9b}.



▷ Q ◁ ▷ < i 96] 96 .

Nunavummi

Reading Series

The Nunavummi Reading Series is a Nunavut-developed series that supports literacy learning while teaching readers about the people, traditions, and environment of the Canadian Arctic.



- 8–12 pages
- One word per page
- No punctuation
- Highly supportive images help readers decode the words



- 8–12 pages
- One sentence per page
- Sentences are very short, basic, and repetitive
- Basic punctuation (periods only)
- Highly supportive images help readers decode the sentences



- 8–12 pages
- One sentence per page
- Sentences become longer and more varied
- Punctuation includes mostly periods, with very few question marks and exclamation marks
- Highly supportive images help readers decode the sentences

