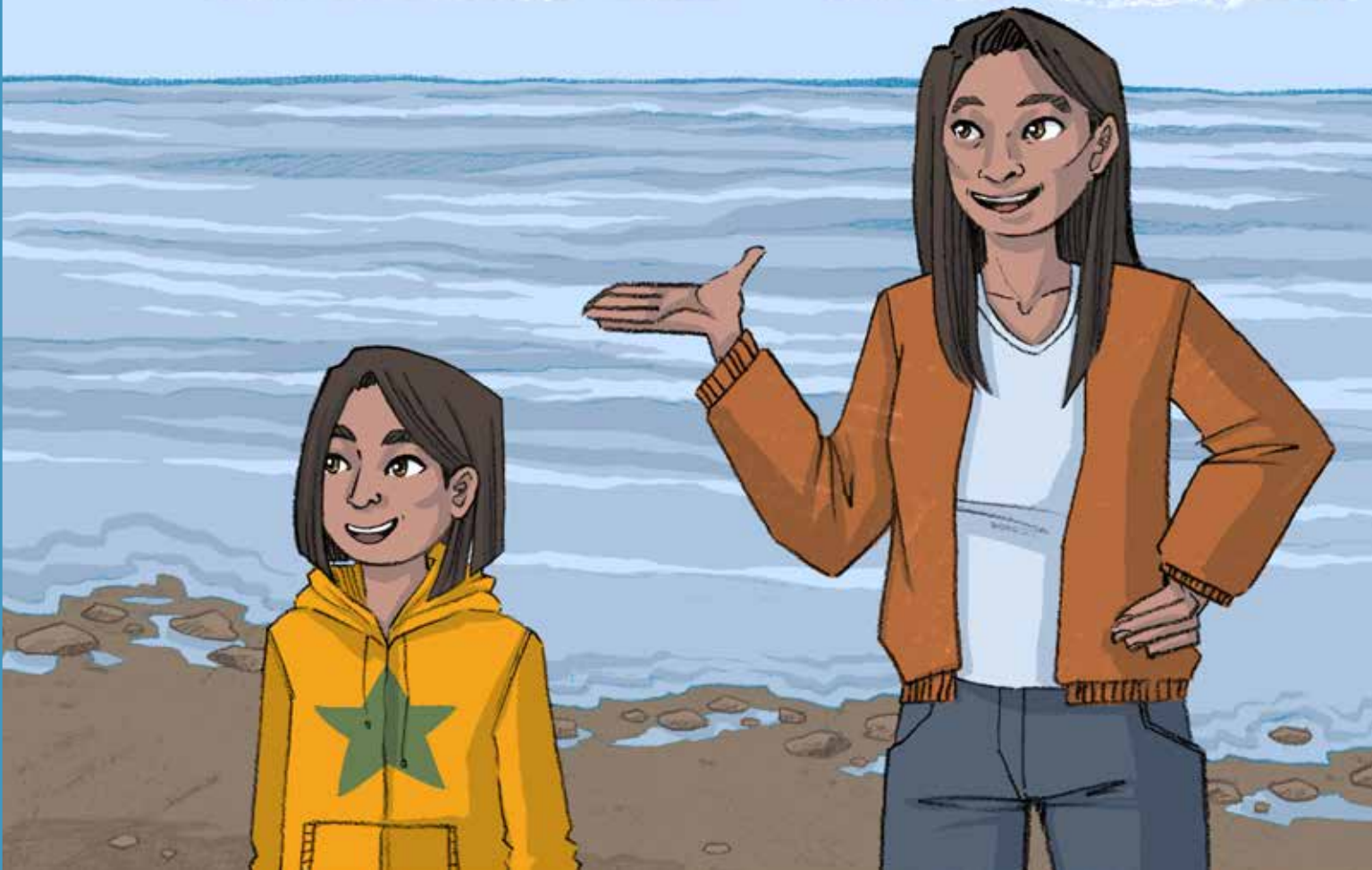


בשנת 2016



Published by Inhabit Education | www.inhabiteducation.com

Inhabit Education

(Iqaluit), P.O. Box 2129, Iqaluit, Nunavut, X0A 1H0

(Toronto), 191 Eglinton Avenue East, Suite 301, Toronto, Ontario, M4P 1K1

Design and layout copyright © 2018 Inhabit Education

Text copyright © Inhabit Education

Illustrations by Lenny Lishchenko © Inhabit Education

Inuktitut Working Group

Monica Ittusardjuat

Andrea Flaherty

Nancy Goupil

All rights reserved. The use of any part of this publication reproduced, transmitted in any form or by any means, electronic, mechanical, photocopying, recording, or otherwise, or stored in a retrievable system, without written consent of the publisher, is an infringement of copyright law.

Printed in Canada.

ISBN: 978-0-2287-0238-2



INHABIT
EDUCATION

כדלל



פדלל
כדלל

כדלל

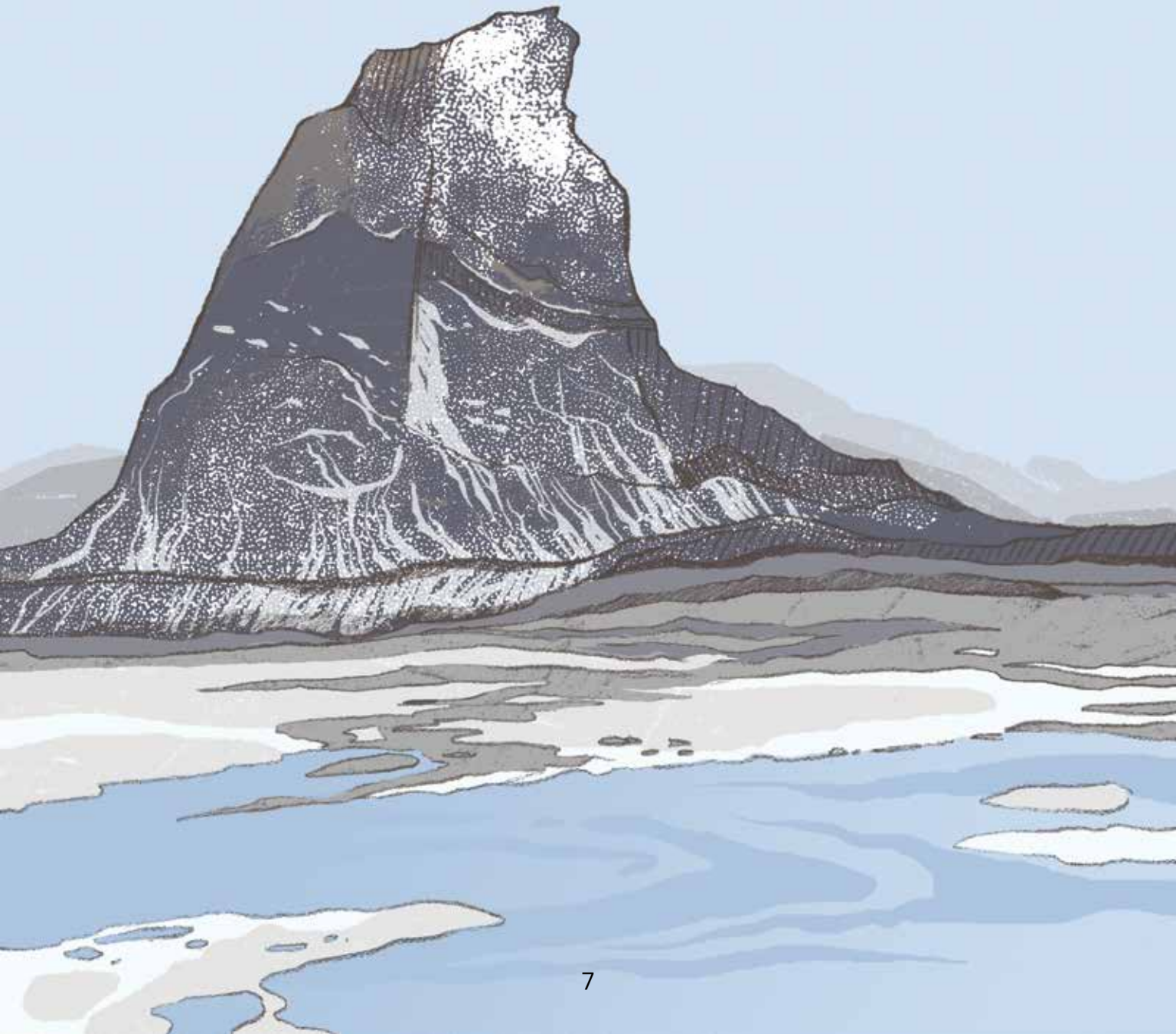
Cd \leftarrow J^b d^a Γ ^b.





Cd²⁺ ለሆሎግራፊ.

Cd \leftarrow J^b ᄡᄡᄡᄡᄡᄡ.





CDK^b C⁹Γ^b.

$Cd \leftarrow J^b \quad \rho d \Gamma^b.$



ငဝဲၵ်း မဝဲၵ်း.



Nunavummi

Reading Series

The Nunavummi Reading Series is a Nunavut-developed series that supports literacy learning while teaching readers about the people, traditions, and environment of the Canadian Arctic.



- 8–12 pages
- One sentence per page
- Sentences are very short, basic, and repetitive
- Basic punctuation (periods only)
- Highly supportive images help readers decode the sentences



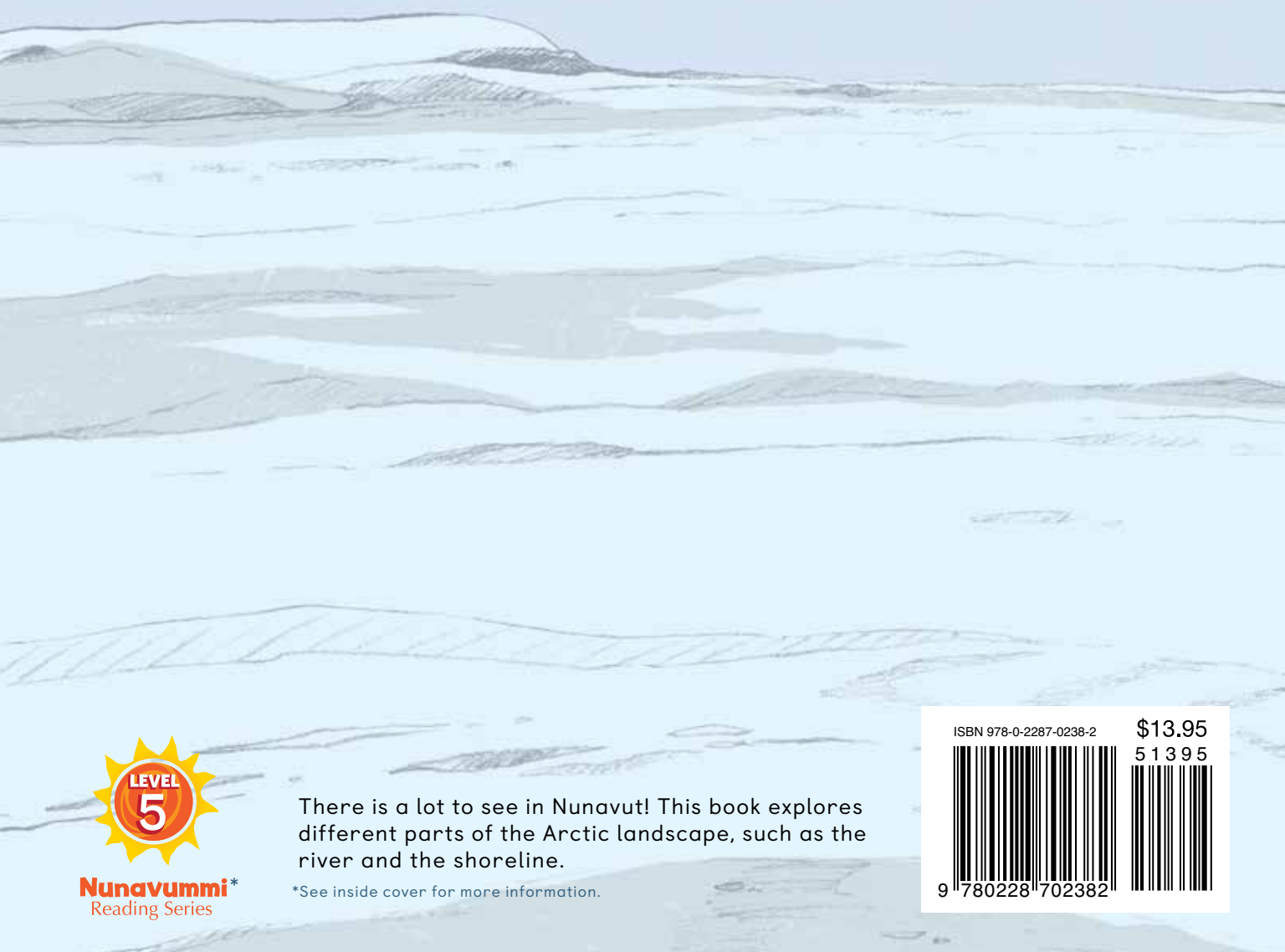
- 8–12 pages
- One sentence per page
- Sentences become longer and more varied
- Punctuation includes periods, with very few question marks and exclamation marks
- Highly supportive images help readers decode the sentences



- 8–12 pages
- 1–2 sentences per page
- More complicated and varied sentences
- Punctuation includes mostly periods, with some question marks and exclamation marks
- Highly supportive images help readers decode the sentences

ᑕᑯᑦᑦᑦ ᑎᑦᑦᑦ ᑎᑦᑦᑦ!

ᑎᑦ ᑎᑦᑦᑦᑦᑦᑦ ᑦᑦᑎᑦᑦᑦᑦ ᑎᑦᑦᑦᑦᑦᑦ
ᑎᑦᑦᑦᑦᑦᑦ, ᑦᑦᑦ ᑎᑦ ᑎᑦᑦᑦᑦᑦᑦ.



Nunavummi*
Reading Series

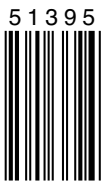
There is a lot to see in Nunavut! This book explores different parts of the Arctic landscape, such as the river and the shoreline.

*See inside cover for more information.

ISBN 978-0-2287-0238-2

\$13.95

5 1 3 9 5



9 780228 702382