



אם יש בך דילמה
כדאי?

Published by Inhabit Education | www.inhabiteducation.com

Inhabit Education

(Iqaluit), P.O. Box 2129, Iqaluit, Nunavut, X0A 1H0

(Toronto), 191 Eglinton Avenue East, Suite 301, Toronto, Ontario, M4P 1K1

Design and layout copyright © 2018 Inhabit Education

Text copyright © Inhabit Education

Illustrations by Lenny Lishchenko © Inhabit Education

Inuktitut Working Group

Monica Ittusardjuat

Andrea Flaherty

Nancy Goupil

All rights reserved. The use of any part of this publication reproduced, transmitted in any form or by any means, electronic, mechanical, photocopying, recording, or otherwise, or stored in a retrievable system, without written consent of the publisher, is an infringement of copyright law.

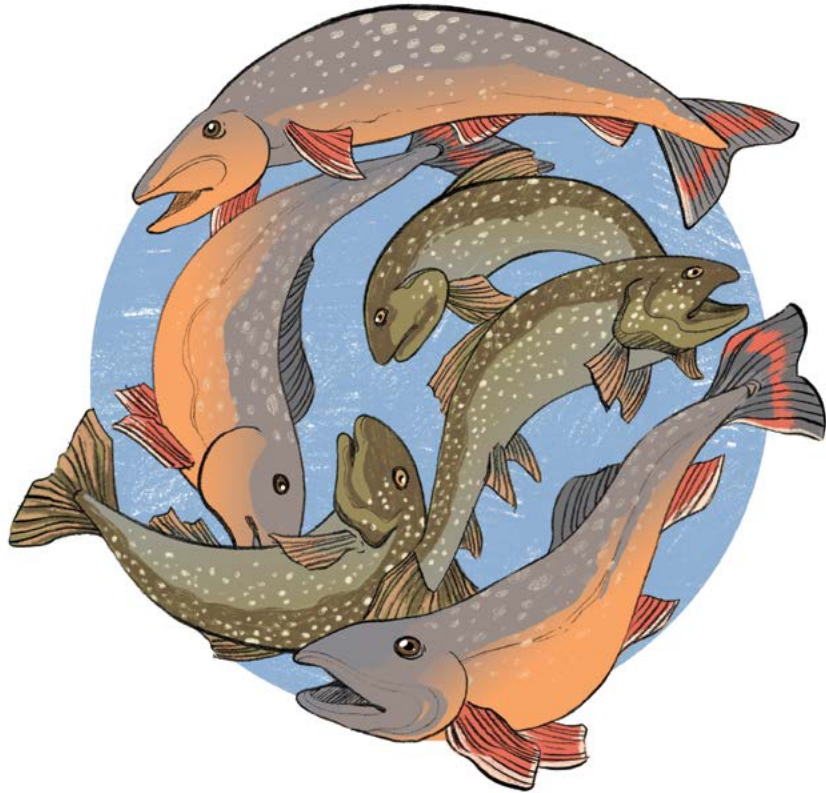
Printed in Canada.

ISBN: 978-0-2287-0258-0



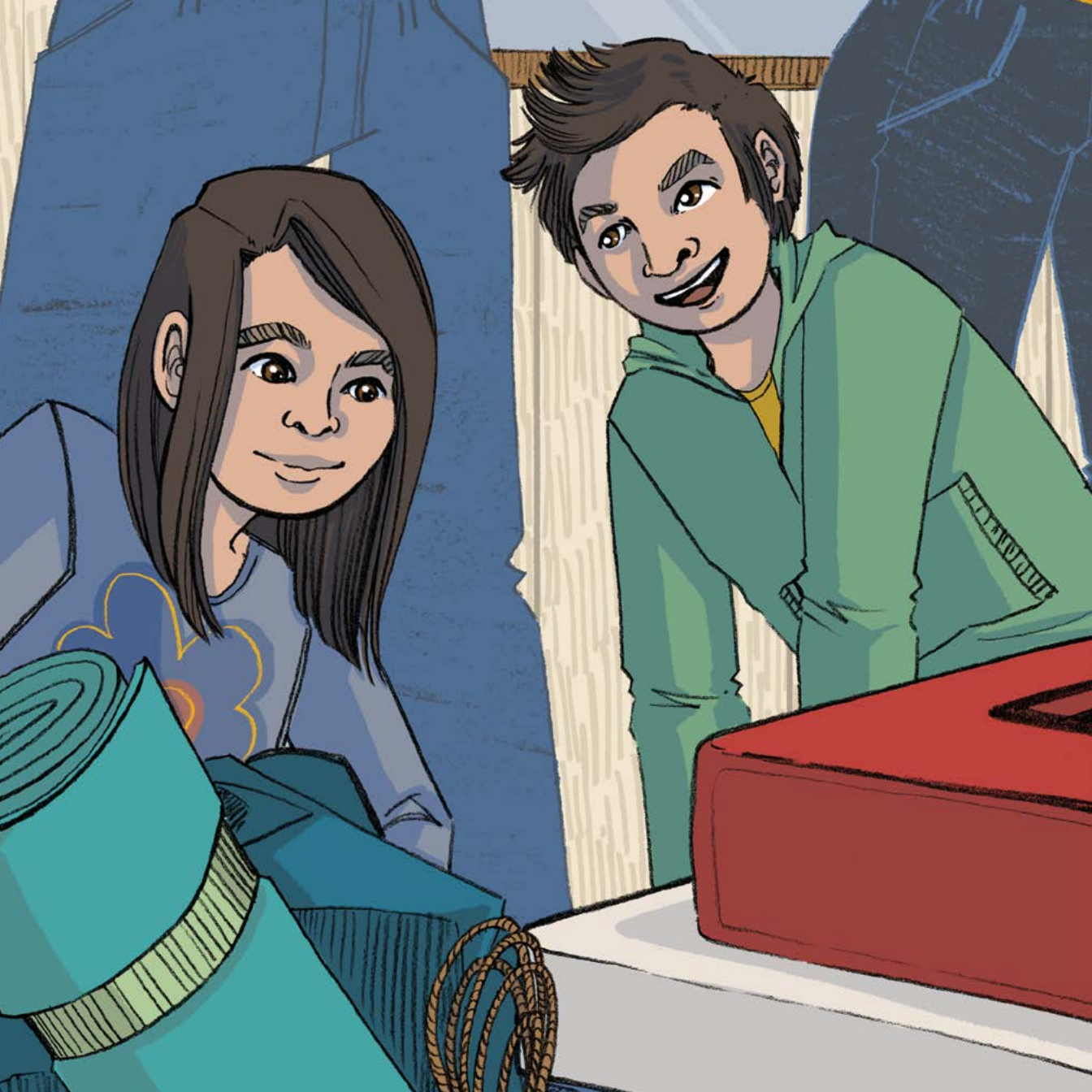
INHABIT
EDUCATION

ᑭᓴᓂᓄᓐ ᐃᓴᓂᓄᓐ ᑕᐃᐱᑕ?



ᓂᓴᓂᓄᓐ ᑕᐃᐱᑕ
ᑕᐃᐱᑕ ᑕᐃᐱᑕ

$\rho \sigma^c \langle \Delta \rangle^c \sigma^c \Delta^{ab} \sigma^c$.
 $\langle \Gamma \rangle^b \rho \sigma^b \Delta^a \sigma^a \sigma^b$
 $C d \sigma^c \Delta^{ab} \sigma^c$.

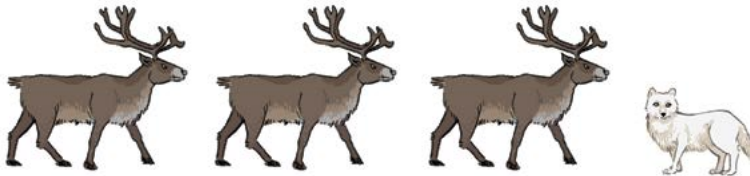




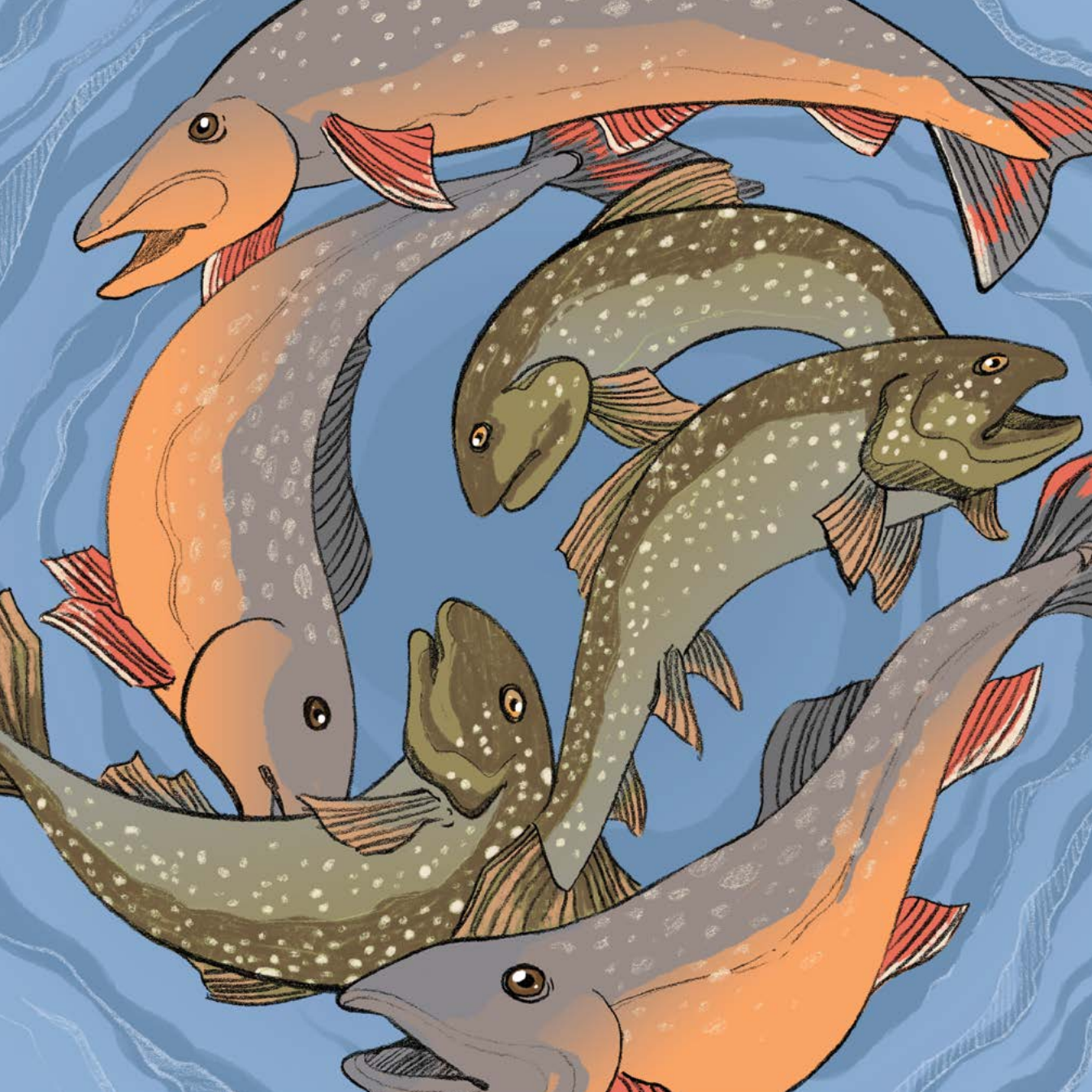
ᐱᑦᑭᑦᑭᑦ ᑎᑦᑭᑦᑭᑦ
ᑕᑦᑕᑦᑕᑦᑕᑦ. ᑕᑦᑕᑦᑕᑦᑕᑦ
ᑕᑦᑕᑦᑕᑦᑕᑦ ᑕᑦᑕᑦᑕᑦᑕᑦ.



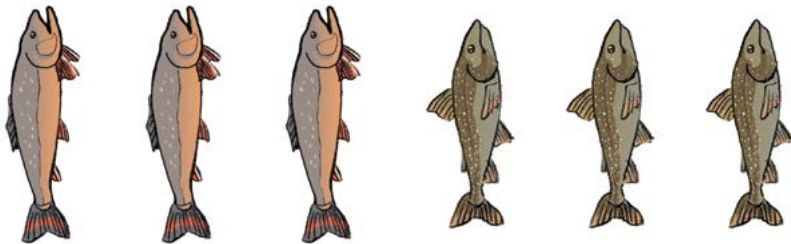
በካሊስታ ልዩ ስራ ማድረግ
ርዕሰ ጉዳይ ነው። ለደረጃ
ለደረጃ ለሥራ ስራ
ርዕሰ ጉዳይ ነው።







◁^ፍል^ሪራ^ሳራ^ሳ ለ^ፍታ^ሳራ^ሳ
ር^ሳር^ሳጋ^ፍጋ^ሳጋ^ሳ. ለ^ፍታ^ሳራ^ሳጋ^ፍጋ^ሳ
ለ^ፍታ^ሳራ^ሳ ለ^ፍታ^ሳራ^ሳ ለ^ፍታ^ሳራ^ሳ
ለ^ፍታ^ሳራ^ሳ.







◁Γʀσᵇ ▷Lʀσᵇ
Cᵈc▷ᶜᵇ▷Jᶜ!

Nunavummi

Reading Series

The Nunavummi Reading Series is a Nunavut-developed series that supports literacy learning while teaching readers about the people, traditions, and environment of the Canadian Arctic.

Level
6

- 8–12 pages
- 1–2 sentences per page
- More complicated and varied sentences
- Punctuation includes mostly periods, with some question marks and exclamation marks
- Highly supportive images help readers decode the sentences



- 8–16 pages
- Generally 1–2 sentences per page
- Sentences increase in length and complexity
- Punctuation includes mostly periods, with some question marks and exclamation marks
- Supportive images

Level
8

- 12–24 pages
- Generally 1–3 sentences per page
- Sentences increase in length and complexity
- Dialogue is introduced in fiction texts, indicated by the word “said”
- Supportive images, but more information now coming from the text

