

# ԴՊԵՁԱԿ ԸՆԴՈՍ



Published by Inhabit Education | [www.inhabiteducation.com](http://www.inhabiteducation.com)

Inhabit Education  
(Iqaluit), P.O. Box 2129, Iqaluit, Nunavut, X0A 1H0  
(Toronto), 191 Eglinton Avenue East, Suite 301, Toronto, Ontario, M4P 1K1

Design and layout copyright © 2018 Inhabit Education  
Text copyright © Inhabit Education  
Illustrations by Sigmundur Thorgeirsson © Inhabit Education

**Inuktitut Working Group**  
Monica Ittusardjuat  
Andrea Flaherty  
Nancy Goupil

All rights reserved. The use of any part of this publication reproduced, transmitted in any form or by any means, electronic, mechanical, photocopying, recording, or otherwise, or stored in a retrievable system, without written consent of the publisher, is an infringement of copyright law.

Printed in Canada.

ISBN: 978-0-2287-0254-2



**INHABIT**  
EDUCATION

# ՏԳԵՊԱԿԱՆ ԴԵՐՄԱՆ



ՈՐՏԵՆԵՆԵՆԵՆ  
ԴԵՐՄԱՆ ԿԱՐԵՎ

▷  $Q$  ◁  $\dot{C}C$ .

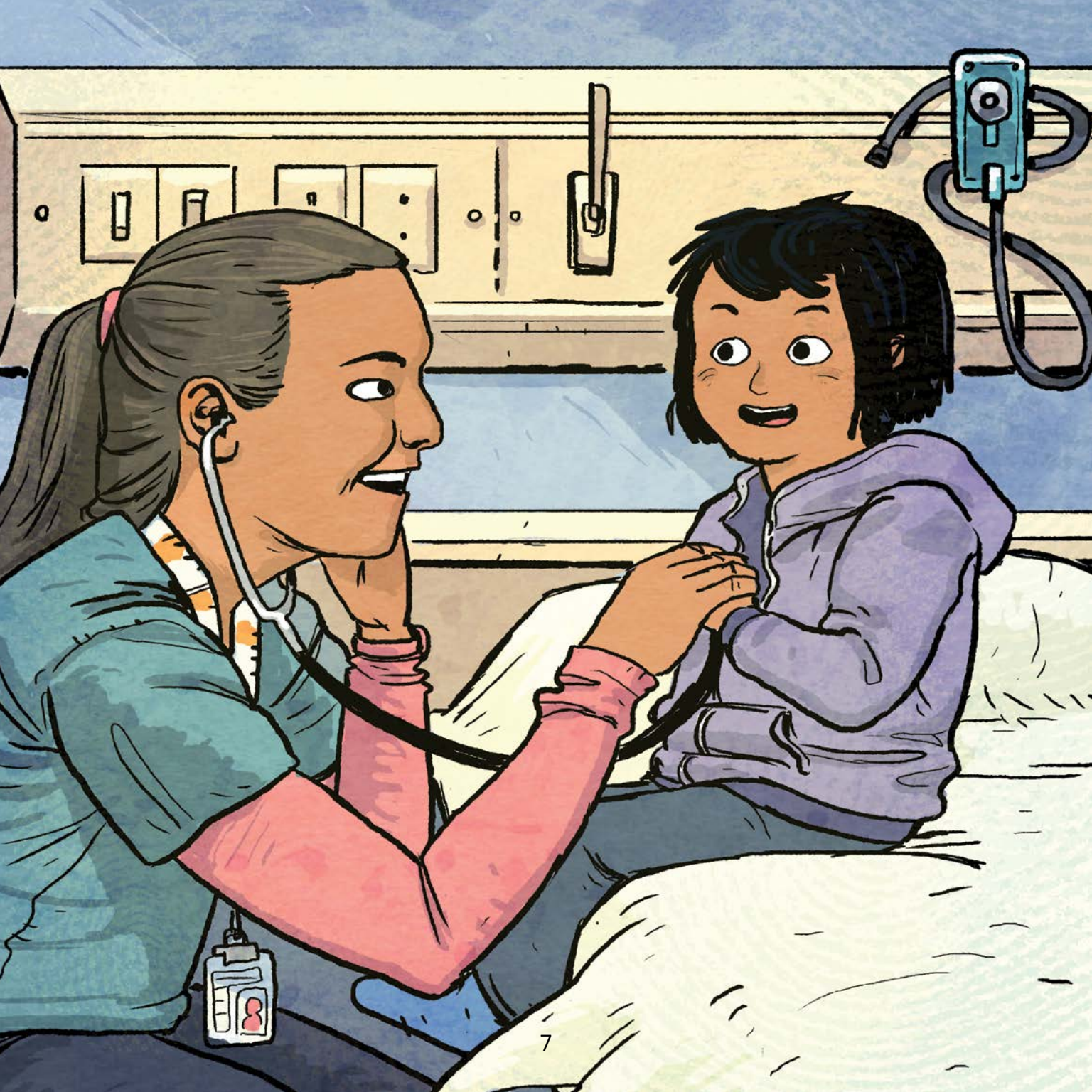
◁  $^{\circ}JQ$   $r^b$   $\cap$  ▷  $\leftarrow$   $^{\circ}b$ .





▷  $Q$  ◁  $\dot{Q}$   $Q$   $L$ .  
 $\Delta$   $C$   $h$   $\Delta$   $\hat{P}$   $\triangleright$   $\leftarrow$   $^{\text{gb}}$ .

▷ ۵ ◁<sup>c</sup> C L .  
ز<sup>b</sup> C<sup>۰</sup> J<sup>۰</sup> ←<sup>۶b</sup> .



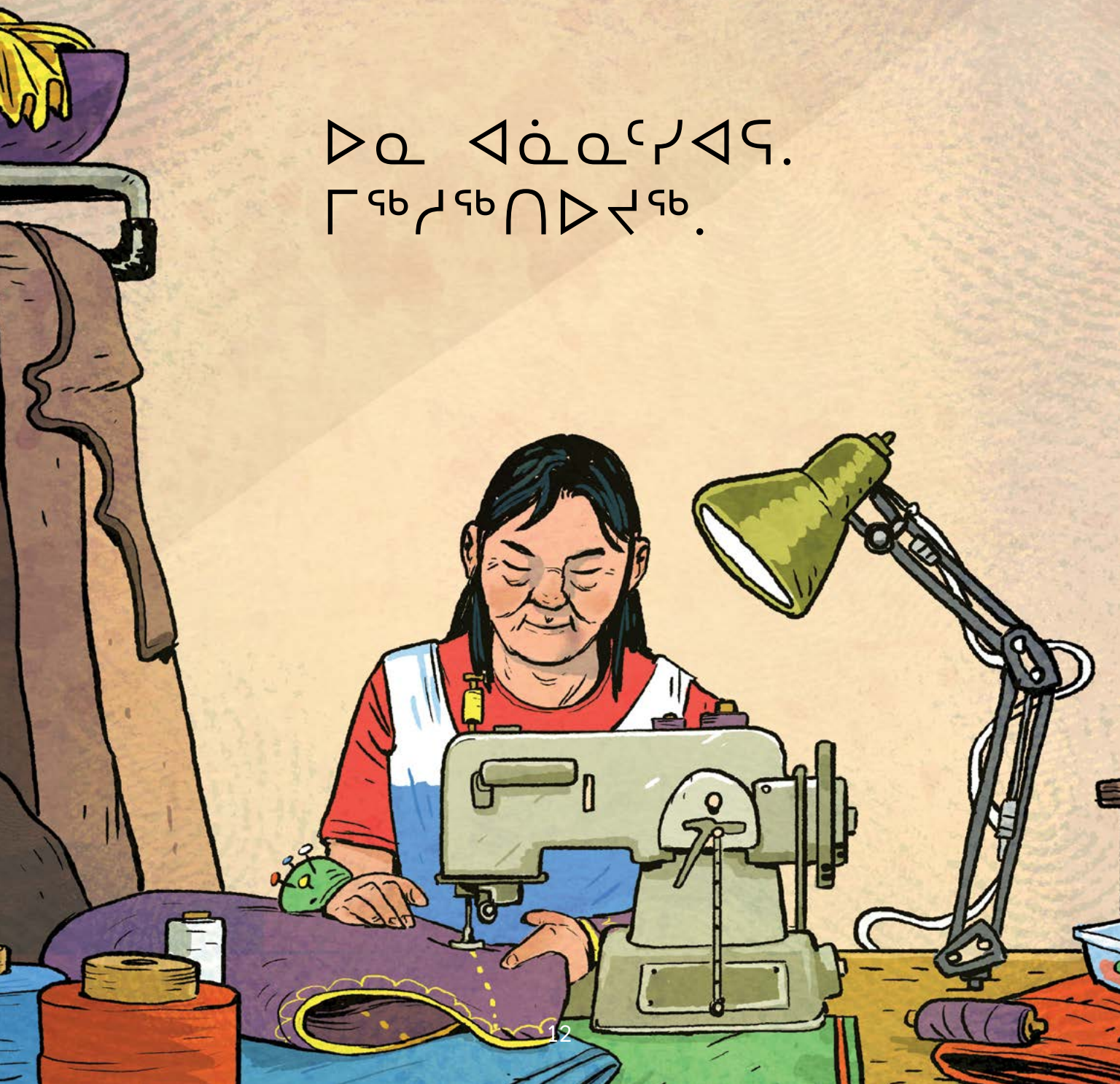


▷  $Q$  ◁<sup>b</sup>  $bL$ .  
ፍ<sup>b</sup>ፍ<sup>c</sup>  $\cap$   $n$   $\triangleright$   $\triangleleft$  ፍ<sup>b</sup>.

▷  $Q \triangleleft \dot{C} C^c \gamma \triangleleft \delta.$   
▷  $\sigma^b \dot{b}^{\delta b} \cap \triangleright \leftarrow^{\delta b}.$



▷ ◁ ◡ ◢ ◣ ◤ ◥ ◦ ◧ ◨ ◩ ◪ ◫ ◬ ◭ ◮ ◯ ◰ ◱ ◲ ◳ ◴ ◵ ◶ ◷ ◸ ◹ ◺ ◻ ◼ ◽ ◾ ◿ ◰ ◱ ◲ ◳ ◴ ◵ ◶ ◷ ◸ ◹ ◺ ◻ ◼ ◽ ◾ ◿



# Nunavummi

## Reading Series

The Nunavummi Reading Series is a Nunavut-developed series that supports literacy learning while teaching readers about the people, traditions, and environment of the Canadian Arctic.

### Level 5

- 8–12 pages
- One sentence per page
- Sentences become longer and more varied
- Punctuation includes mostly periods, with very few question marks and exclamation marks
- Highly supportive images help readers decode the sentences

### 6

- 8–12 pages
- 1–2 sentences per page
- More complicated and varied sentences
- Punctuation includes mostly periods, with some question marks and exclamation marks
- Highly supportive images help readers decode the sentences

### Level 7

- 8–16 pages
- Generally 1–2 sentences per page
- Sentences increase in length and complexity
- Punctuation includes mostly periods, with some question marks and exclamation marks
- Supportive images

