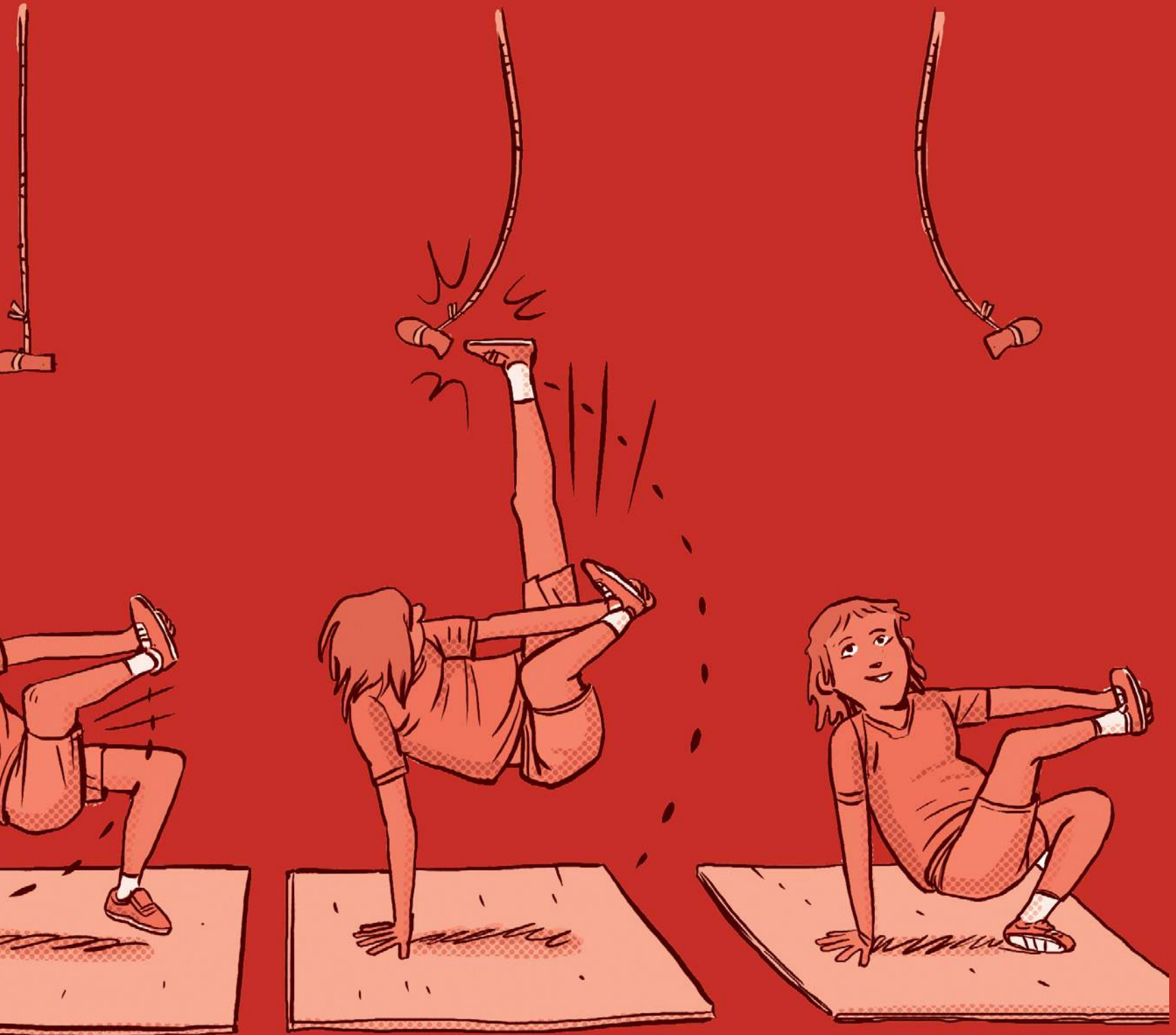


አድልዎ ለህግ ጋር ትቶ









ΔΕΛΤΑ ΑΝΤΙΣΤΑΣΗΣ



Nunavummi

The Nunavummi reading series is a Nunavut-developed levelled book series that supports literacy development while teaching readers about the people, traditions, and environment of the Canadian Arctic.

Published in Canada by Nunavummi, an imprint of Inhabit Education Books Inc. | www.inhabiteducation.com

Inhabit Education Books Inc.
(Iqaluit), P.O. Box 2129, Iqaluit, Nunavut, X0A 1H0
(Toronto), 191 Eglinton Avenue East, Suite 301, Toronto, Ontario, M4P 1K1

Design and layout copyright © 2019 Inhabit Education Books Inc.
Text copyright © Inhabit Education Books Inc.
Illustrations by Sigmundur Thorgeirsson © Inhabit Education Books Inc.

Inuktitut Working Group

Monica Ittusardjuat
Andrea Flaherty
Nancy Goupil
Jeela Palluq-Cloutier

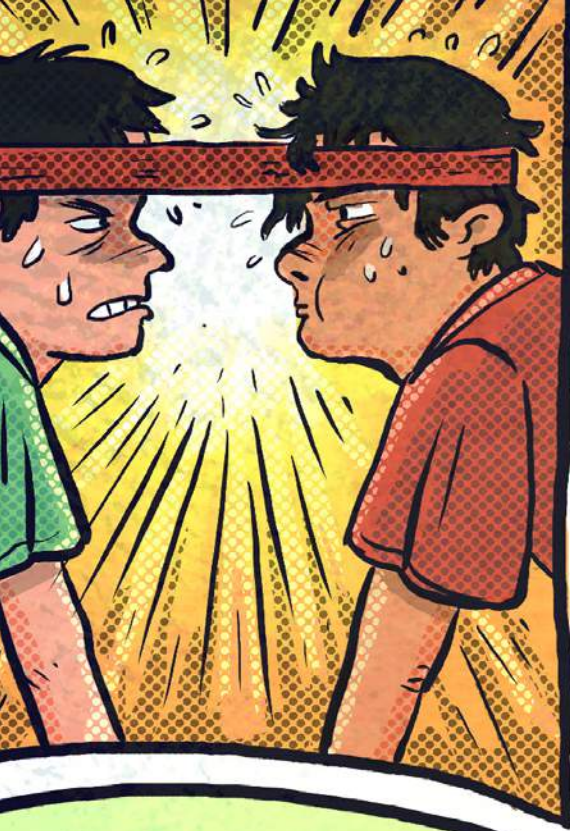
All rights reserved. The use of any part of this publication reproduced, transmitted in any form or by any means, electronic, mechanical, photocopying, recording, or otherwise, or stored in a retrievable system, without written consent of the publisher, is an infringement of copyright law.

Printed in Canada.

ISBN: 978-0-2287-0288-7



INHABIT
EDUCATION



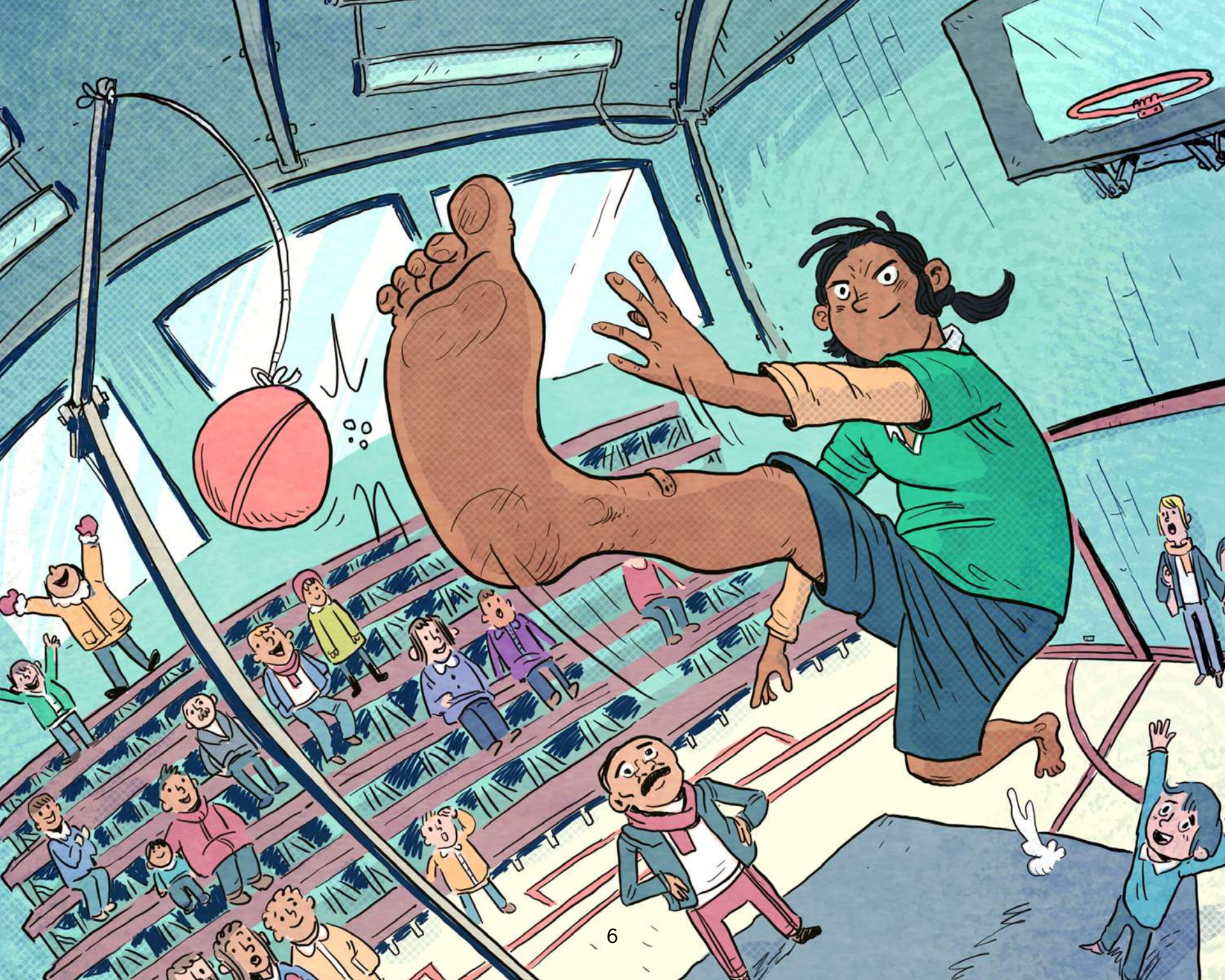
ፍጠራዎችን ለማድረግ ለሚያስፈልጉት ሁሉም
ሰነድ ለማግኘት ለማረጋገጥ?

ሁሉም ሰነድ ለማግኘት ለሚያስፈልጉት ሁሉም
ሰነድ ለማግኘት ለማረጋገጥ ከሌሎች ጋር ለማረጋገጥ
ሰነድ ለማግኘት ለማረጋገጥ ለሚያስፈልጉት ሁሉም
ሰነድ ለማግኘት ለማረጋገጥ!

ΔοΔ^c ἰδιόκτης ἢ ἀκίνητος ἄκίνητος ἄκίνητος ἄκίνητος.
ΔοΔ^c ἄκίνητος ἄκίνητος ΔοΔ^c ἄκίνητος ἄκίνητος
ἄκίνητος ἄκίνητος ἄκίνητος ἄκίνητος ἄκίνητος.

ΔοΔ^c ἄκίνητος ἄκίνητος ἄκίνητος ἄκίνητος
ΔοΔ^c ἄκίνητος ἄκίνητος ἄκίνητος ἄκίνητος. ΔοΔ^c
ἄκίνητος ἄκίνητος ἄκίνητος ἄκίνητος ἄκίνητος.
ἄκίνητος ἄκίνητος ἄκίνητος ἄκίνητος ἄκίνητος
ἄκίνητος ἄκίνητος ἄκίνητος ἄκίνητος ἄκίνητος.



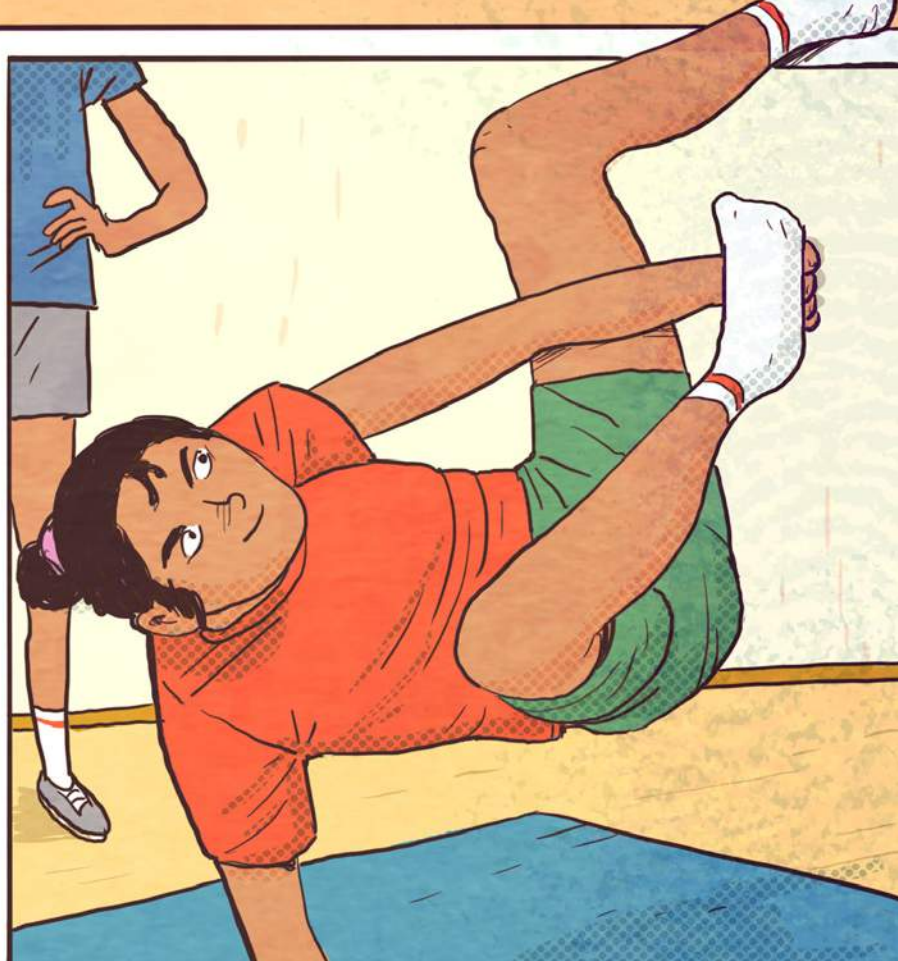


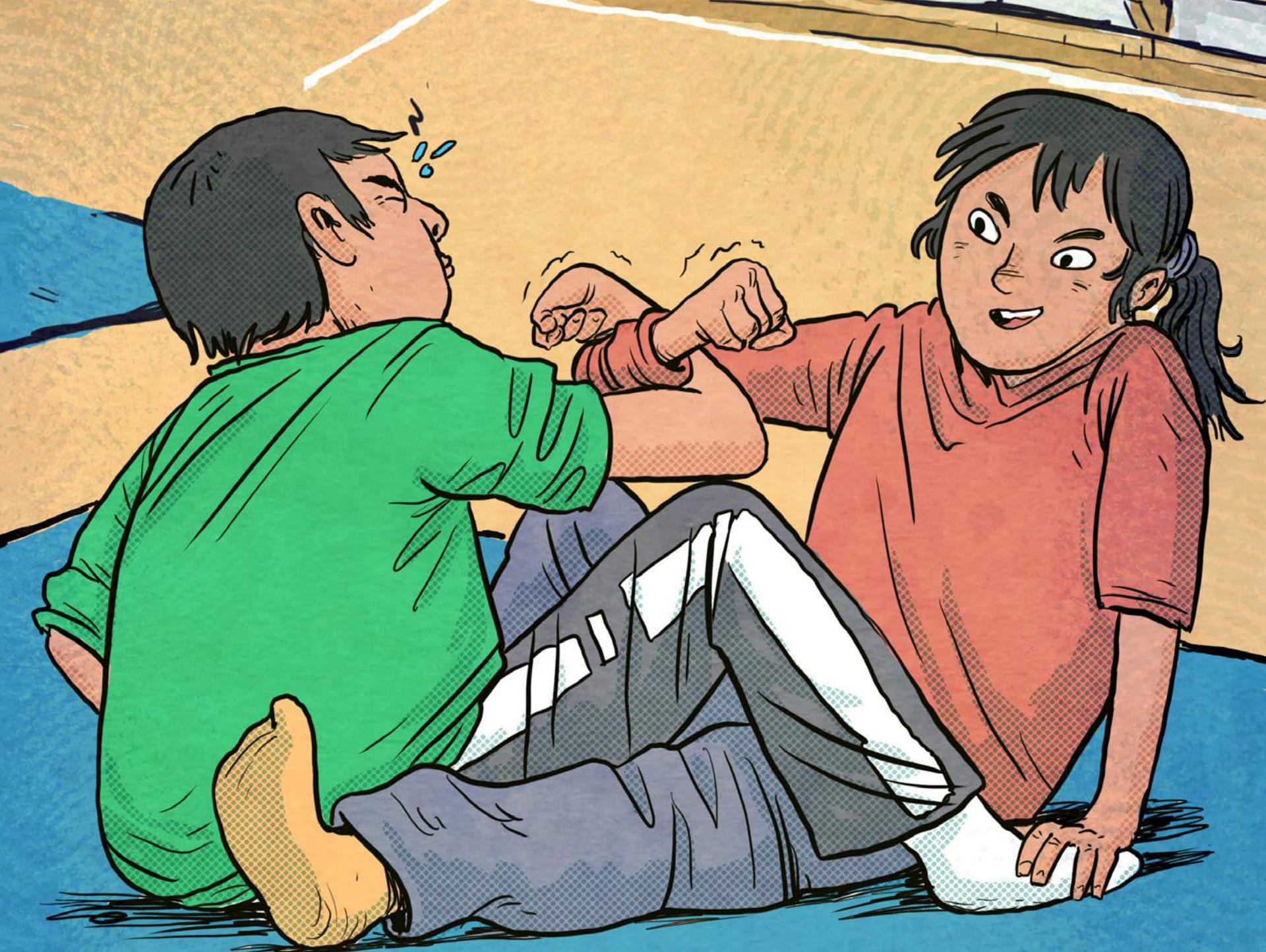
ᐅᑦᐅᑦ, ᐃᓄᐃᑦ ᑦᑲᑦᑦᑦ ᐅᑦᑦᑦᑦᑦᑦᑦᑦ ᐃᓄᐃᑦ
ᐱᑦᑦᑦᑦᑦᑦᑦᑦ ᐱᑦᑦᑦᑦᑦᑦᑦᑦ ᐃᑦᑦᑦᑦᑦᑦᑦᑦ,
ᐱᑦᑦᑦᑦᑦᑦᑦᑦ, ᐱᑦᑦᑦᑦᑦᑦᑦᑦ.

ᐱᑦᑦᑦᑦᑦᑦᑦᑦ, ᐱᑦᑦᑦᑦᑦᑦᑦᑦ ᑦᑦᑦᑦᑦᑦᑦᑦ
ᑲᑦᑦᑦᑦᑦᑦᑦᑦ ᑦᑦᑦᑦᑦᑦᑦᑦᑦᑦᑦᑦᑦᑦᑦᑦᑦ.
ᐱᑦᑦᑦᑦᑦᑦᑦᑦᑦ ᑦᑦᑦᑦᑦᑦᑦᑦᑦᑦᑦᑦᑦᑦᑦᑦᑦ. ᐱᑦᑦᑦᑦᑦᑦᑦᑦᑦ
ᐃᑦᑦᑦᑦᑦᑦᑦᑦᑦᑦᑦᑦᑦᑦᑦᑦᑦᑦᑦᑦᑦᑦᑦᑦᑦᑦᑦ.

ᐅᑦᑦᑦ ᐅᑦᑦᑦᑦᑦᑦᑦ ᐅᑦᑦᑦ ᐅᑦᑦᑦᑦᑦᑦᑦᑦᑦ.
ᐅᑦᑦᑦᑦᑦᑦᑦ ᐅᑦᑦᑦᑦᑦᑦᑦ ᐅᑦᑦᑦᑦᑦᑦᑦᑦᑦ ᐅᑦᑦᑦᑦᑦᑦᑦᑦᑦᑦ
ᑦᑦᑦᑦᑦᑦᑦᑦᑦᑦ. ᐅᑦᑦᑦᑦᑦᑦᑦᑦ, ᐅᑦᑦᑦᑦ ᐅᑦᑦᑦᑦᑦᑦᑦᑦ
ᑦᑦᑦᑦᑦᑦᑦᑦᑦᑦᑦᑦ ᑦᑦ ᑦᑦᑦᑦᑦ ᑦᑦᑦᑦᑦᑦᑦᑦᑦᑦᑦ.
ᐅᑦᑦᑦᑦᑦᑦᑦ ᐅᑦᑦᑦᑦᑦᑦᑦ ᑦᑦᑦᑦᑦᑦᑦᑦᑦᑦᑦᑦ ᑦᑦ
ᑦᑦᑦᑦᑦᑦᑦᑦᑦᑦᑦᑦ ᑦᑦᑦᑦ ᑦᑦᑦᑦᑦᑦᑦᑦᑦ ᐅᑦᑦᑦᑦᑦᑦᑦᑦᑦᑦ.

ᑦᑦᑦᑦᑦᑦᑦᑦ ᑦᑦᑦᑦᑦ ᐅᑦᑦᑦᑦᑦᑦᑦᑦ?

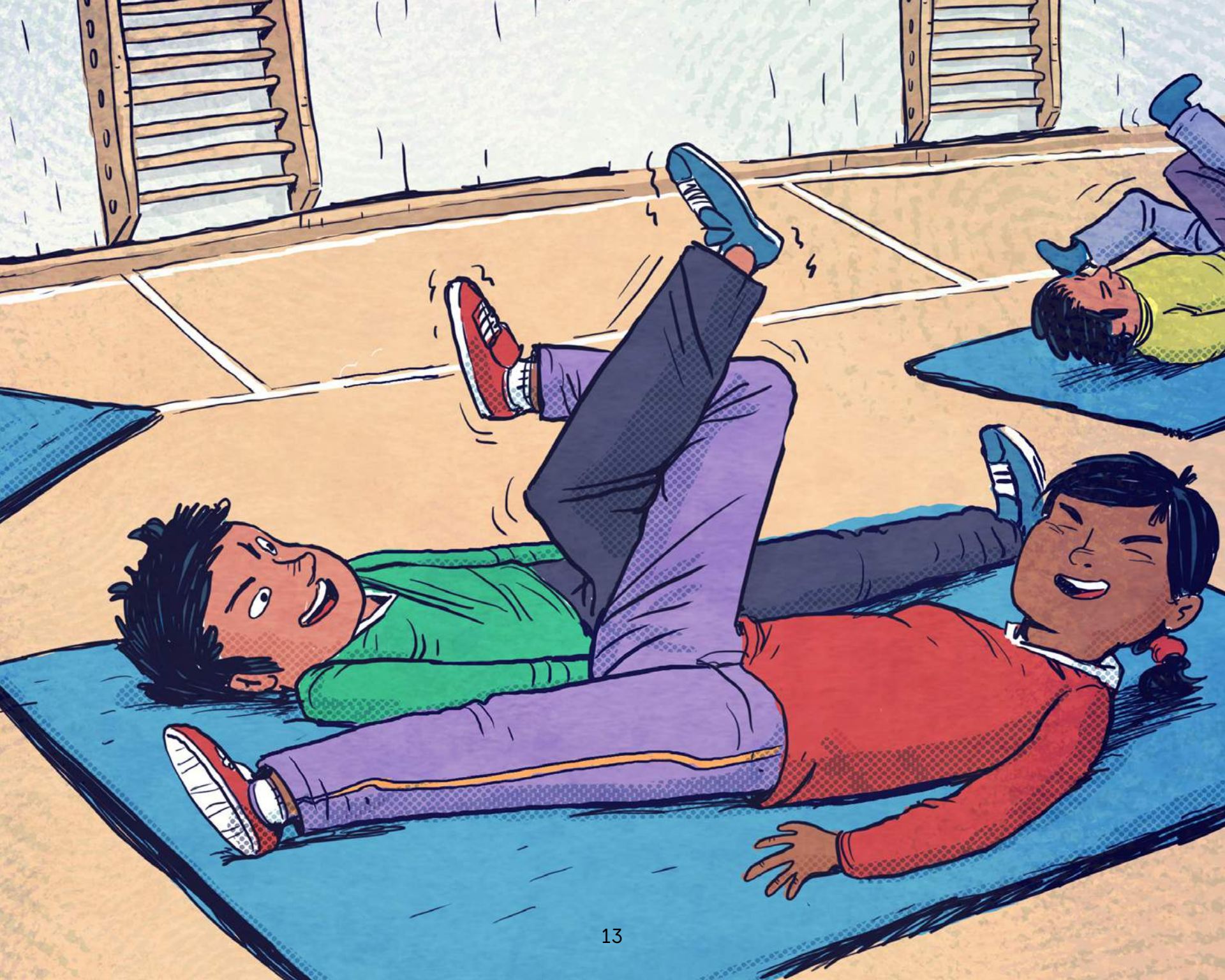




ᐅᐃᐃ ᑕᑦᑲ ᐱᓃᓂᐃᑦᑕᐅᓂᑦᑕᑦ.

ᑕᑕᑦᑕᑦ ᐃᑦᑕᑦᑕᑦᑕᑦᑕᑦ, ᑕᑕᑦᑕᑦ ᑦᑕᑕᑦᑕᑦᑕᑦᑕᑦ ᑕᑕᑦᑕᑦ
ᑕᑕᑦᑕᑦᑕᑦ ᑦᑕᑕᑦᑕᑦᑕᑦᑕᑦᑕᑦ. ᑕᑕᑦᑕᑦᑕᑦ ᐃᑕᑦᑕᑦᑕᑦ
ᐃᑦᑕᑦᑕᑦᑕᑦᑕᑦ ᐃᑦᑕᑦᑕᑦᑕᑦᑕᑦ.

ᑕᑕᑦᑕᑦ ᐃᑦᑕᑦᑕᑦᑕᑦᑕᑦ, ᑕᑕᑦᑕᑦ ᑦᑕᑕᑦᑕᑦᑕᑦᑕᑦ ᑕᑕᑦᑕᑦ
ᑕᑕᑦᑕᑦᑕᑦ ᑦᑕᑕᑦᑕᑦᑕᑦᑕᑦᑕᑦ. ᑕᑕᑦᑕᑦ ᑕᑕᑦᑕᑦᑕᑦ ᐃᑕᑦᑕᑦᑕᑦ
ᑕᑕᑦᑕᑦ ᐃᑦᑕᑦᑕᑦᑕᑦᑕᑦ.





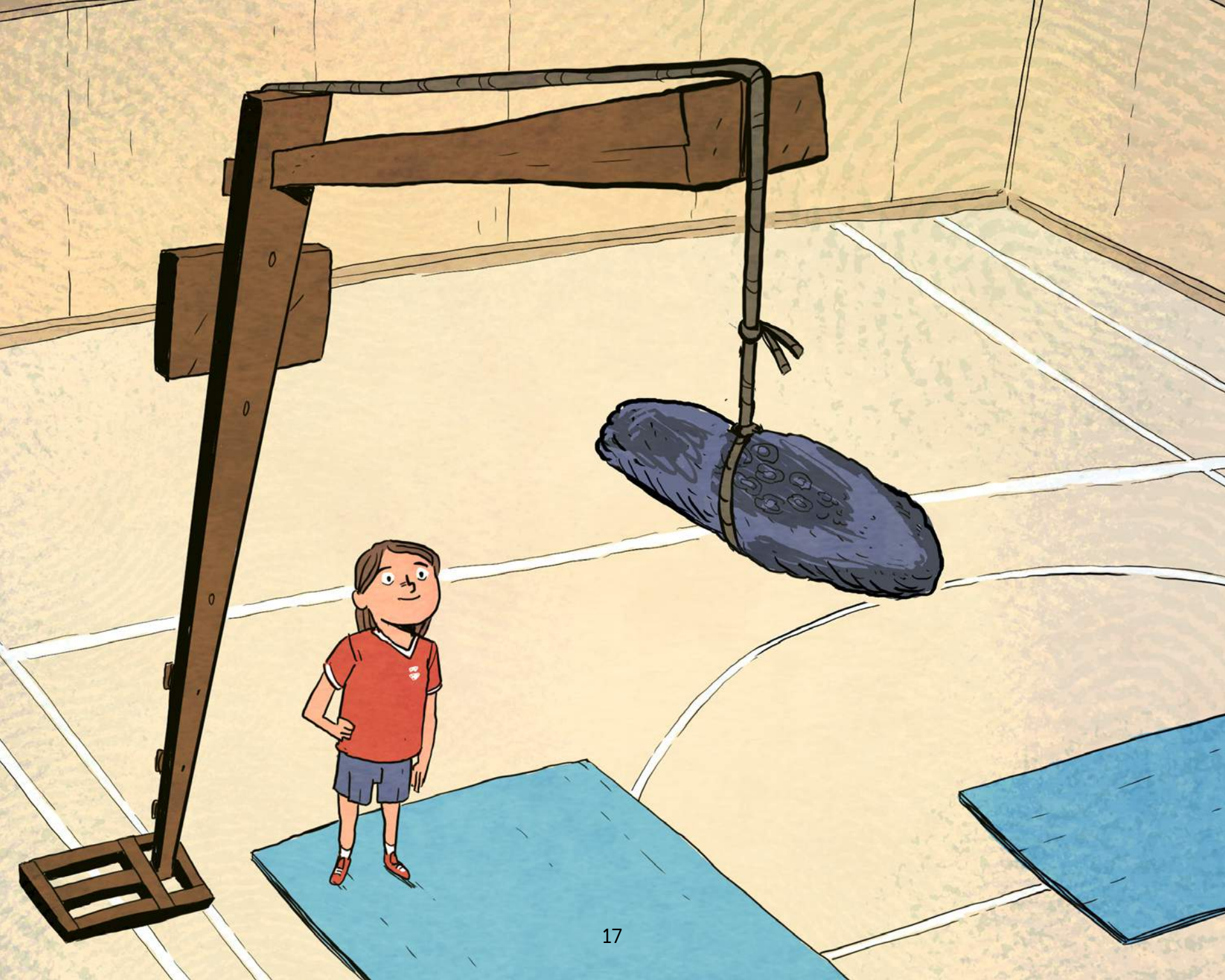
▷Γ^εΛ▷Ζ^εΩσ, Λ^εΰ^ε ρ^εΝ^εΓ ρ^εδ^ες^εΩ^εΝ^ε
 Γ^εϵ^εΝ^ε σ▷ϵ▷Ν^εΩ^εΡ^ε ▷Γ^εΛ^εΝ^εΩ^ε! ΩΔΓ^ε⊖^ε
 ◁Ζ^εϵ^εΓ▷Ν^ερ^εΩ^ε.

σ◁^εδ^ε⊂^ε ⊖^εΩ^εΖ^ε◁^εσ^ε, Λ^εϵ^ε◁^εΩ^ε
 σ◁^εδ^εΓ▷Γ^εϵ^εΩ^εΝ^ε. ◁Ωσ ⊖^ερ^εϵ^εΓ▷Ν^ερ^εσ◁^εΩ^ε
 σ◁^εδ^εΔ^ερ^εΩ^ε ρ^εδ^ες^εΩ^εΝ^ε ◁Ω^εΩσ^εΖ^ε.

ᐊᑦᑭᑦᑭᑦ ᐱᓄᑭᐊᑭᑦ

ᐊᑦᑭᑦᑭᑦᐱᑭᑦ ᑦᑭᑭᑦᑭᑦᑭᑦᑭᑦ ᑦᑭᑭᑦ ᐱᓄᑭᐊᑦᑭᑦ
ᐱᑦᑭᑦᑭᑦᑭᑦᑭᑦ ᑭᑦᑭᑦᑭᑦᑭᑦᑭᑦᑭᑦᑭᑦᑭᑦ.

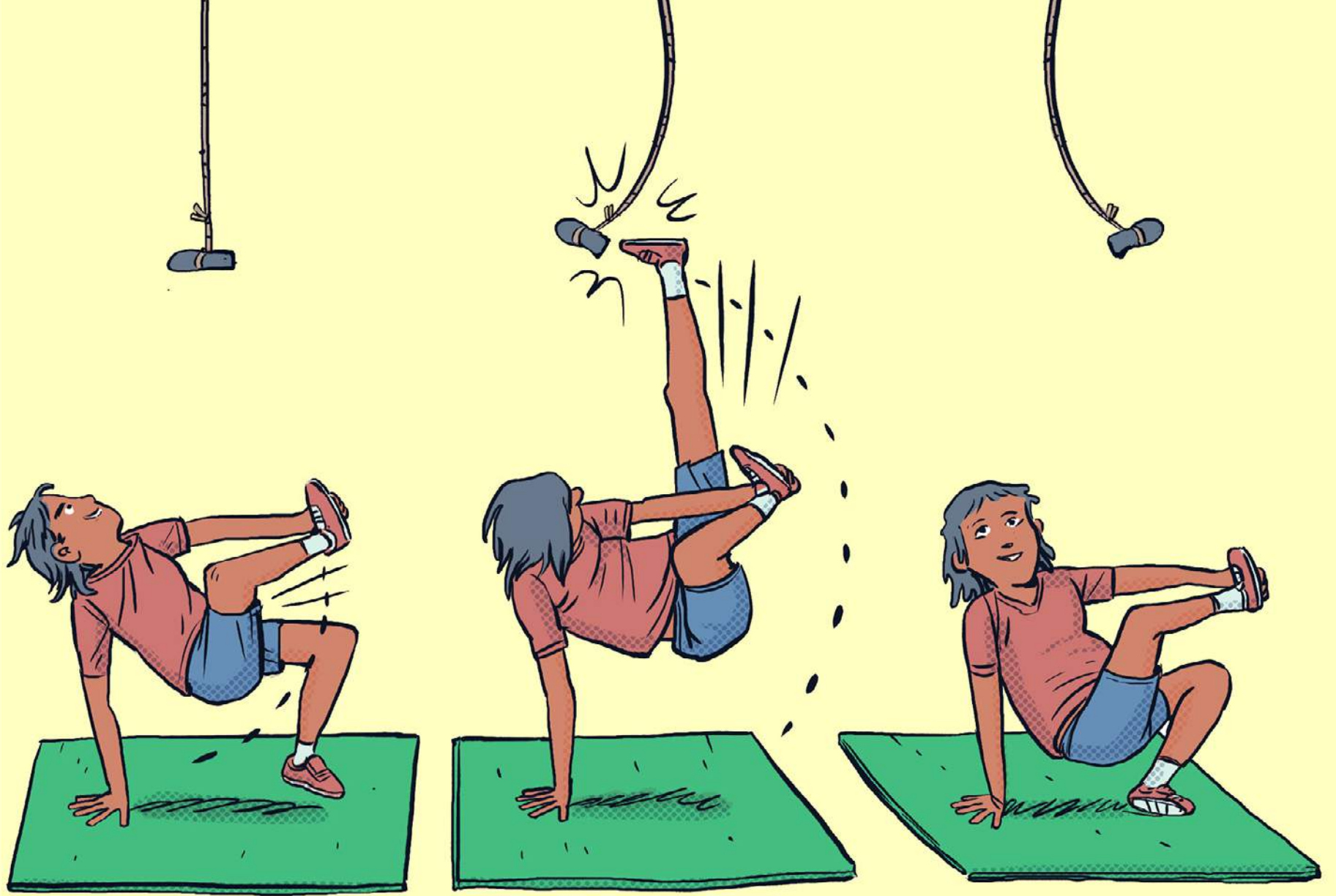
ᐊᑦᑭᑦᑭᑦᑭᑦ ᐱᓄᑭᐊᑦᑭᑦᑭᑦᑭᑦ ᐊᑦᑭᑦᑭᑦᑭᑦᑭᑦᑭᑦ.
ᐊᑦᑭᑦᑭᑦᑭᑦᑭᑦ ᑭᑦᑭᑦᑭᑦᑭᑦᑭᑦᑭᑦᑭᑦ
ᐊᑦᑭᑦᑭᑦᑭᑦᑭᑦ. ᐊᑦᑭᑦᑭᑦᑭᑦᑭᑦ ᑭᑦᑭᑦᑭᑦᑭᑦᑭᑦ. ᑦᑭᑦᑭᑦᑭᑦ
ᑦᑭᑦᑭᑦᑭᑦ.





Δαίμονες ἀπορροῶν, ἀπορροῶν ἑξῆς Δαίμων
ἐπιπέσει ἡμῶν ἡμεῖς ἀπορροῶν ἑξῆς. Δαίμων
ἑξῆς ἀπορροῶν ἑξῆς. ἑξῆς
ἀπορροῶν ἑξῆς ἀπορροῶν ἑξῆς. ἑξῆς
ἀπορροῶν ἑξῆς ἀπορροῶν ἑξῆς!





Nunavummi

Reading Series

The Nunavummi reading series is a Nunavut-developed levelled book series that supports literacy development while teaching readers about the people, traditions, and environment of the Canadian Arctic.

Level 10

- 16–32 pages
- Sentences and stories become longer and more complex
- Varied punctuation
- Dialogue is included in fiction texts
- Readers rely more on the words than the images to decode the text

11

- 24–32 pages
- Sentences become complex and varied
- Varied punctuation
- Dialogue is included in fiction texts and is necessary to understand the story
- Readers rely more on the words than the images to decode the text

Level 12

- 24–40 pages
- Sentences are complex and vary in length
- Lots of varied punctuation
- Dialogue is included in fiction texts and is necessary to understand the story
- Readers rely on the words to decode the text; images are present but only somewhat supportive

ᑭᓴᑦᑭᓪᑦ ᑕᐃᑦᑦᑭᓪᑦ



ᑭᓴᑦᑭᓪᑦ ᑕᐃᑦᑦᑭᓪᑦ ᐃᐃᓪᑦᑦᑭᑦᑕᑦᑕᑦᑕᑦ
ᑎᑎᑦᑕᓴᑦᑕᑦ ᑦᑕᑦᑕᑦᑕᑦᑕᑦᑕᑦᑕᑦᑕᑦ.
ᑎᑎᑦᑕᓴᑦᑕᑦᑕᑦ ᐃᑕᑦᑕᑦᑕᑦᑕᑦᑕᑦᑕᑦᑕᑦ
The Reykjavik School of
Visual Arts-ᑦ ᐃᐃᓪᑦᑦᑭᑦ ᐃᑕᑦᑕᑦ
ᐃᑕᑦᑕᑦᑕᑦᑕᑦᑕᑦᑕᑦᑕᑦᑕᑦᑕᑦᑕᑦᑕᑦ
ᑎᑎᑦᑕᓴᑦᑕᑦᑕᑦ ᐱᑕᑦᑕᑦᑕᑦᑕᑦᑕᑦᑕᑦᑕᑦ
ᑭᐱᑦᑕᑦᑕᑦᑕᑦᑕᑦᑕᑦ Laguna College of
Art and Design-ᑦᑕᑦᑕᑦᑕᑦᑕᑦᑕᑦᑕᑦᑕᑦ,
ᐃᑕᑦᑕᑦᑕᑦᑕᑦ. ᑎᑎᑦᑕᓴᑦᑕᑦᑕᑦᑕᑦᑕᑦᑕᑦᑕᑦ
ᐱᑕᑦᑕᑦᑕᑦᑕᑦᑕᑦᑕᑦᑕᑦᑕᑦᑕᑦᑕᑦᑕᑦᑕᑦ
ᐃᑕᑦᑕᑦᑕᑦᑕᑦᑕᑦᑕᑦᑕᑦᑕᑦᑕᑦᑕᑦᑕᑦᑕᑦ.



